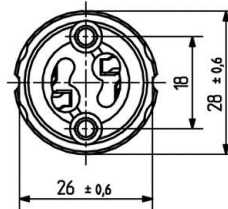
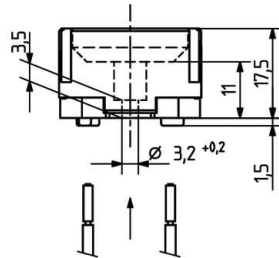


 Create pdf

## Lampholders for mains voltage halogen lamps

25.829.3000

GU10





pkg. wt. part no.  
500 14 g 25.829.3000.00

Connection: Push wire contacts  
Approval: additional cURus (200° C)

Screw fixing

Housing: Ceramic / PPS  
Contacts: CuNi - CrNi

- Wires permanently joined after insertion
- The correct function is obtained by screw fixing or by combination with snap in insulating caps 25.919.-30x

T250			2 A 250 V
		max. $\varnothing$ 1.8 mm	

Document generated on: Fr, 10. February 2017 - 14:54